

Support Unit BF (Supported-side rectangular type)

Order Coding	Model No.	Surface treatment	Applicable ball/crown accuracy grade	Bearing
BF10_C7	BF10	Black Oxide	C7	608ZZ
BF10_C3			C3 C5	608ZZ
BF10_C7N		Electroless Nickel Plating	C7	608DD
BF10_C3N			C3 C5	608DD
BF12_C7	BF12	Black Oxide	C7	6000ZZ
BF12_C3			C3 C5	6000ZZ
BF12_C7N		Electroless Nickel Plating	C7	6000DDU
BF12_C3N			C3 C5	6000DDU
BF15_C7	BF15	Black Oxide	C7	6002ZZ
BF15_C3			C3 C5	6002ZZ
BF15_C7N		Electroless Nickel Plating	C7	6002DDU
BF15_C3N			C3 C5	6002DDU
BF17_C7	BF17	Black Oxide	C7	6203ZZ
BF17_C3			C3 C5	6203ZZ
BF17_C7N		Electroless Nickel Plating	C7	6203DDU
BF17_C3N			C3 C5	6203DDU
BF20_C7	BF20	Black Oxide	C7	6004ZZ
BF20_C3			C3 C5	6004ZZ
BF20_C7N		Electroless Nickel Plating	C7	6004DDU
BF20_C3N			C3 C5	6004DDU
BF25_C7	BF25	Black Oxide	C7	6205ZZ
BF25_C3			C3 C5	6205ZZ
BF25_C7N		Electroless Nickel Plating	C7	6205DDU
BF25_C3N			C3 C5	6205DDU
BF30_C7	BF30	Black Oxide	C7	6206ZZ
BF30_C3			C3 C5	6206ZZ
BF30_C7N		Electroless Nickel Plating	C7	6206DDU
BF30_C3N			C3 C5	6206DDU
BF35_C7	BF35	Black Oxide	C7	6207ZZ
BF35_C3			C3 C5	6207ZZ
BF35_C7N		Electroless Nickel Plating	C7	6207DDU
BF35_C3N			C3 C5	6207DDU
BF40_C7	BF40	Black Oxide	C7	6208ZZ
BF40_C3			C3 C5	6208ZZ
BF40_C7N		Electroless Nickel Plating	C7	6208DDU
BF40_C3N			C3 C5	6208DDU



Black Oxide (Application : General case)



Electroless Nickel Plating (Application : Clean room)

- (Note)
1. (It is used double pressed steel cages for Black Oxide type support units .)
 2. (It is used double plastic cages for Electroless Nickel Plating type support units .)
 3. (All of bearings use Japanese brand bearings.)

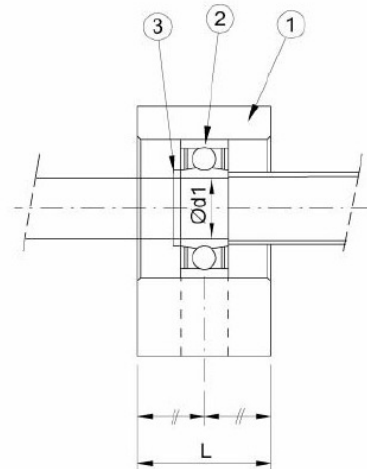
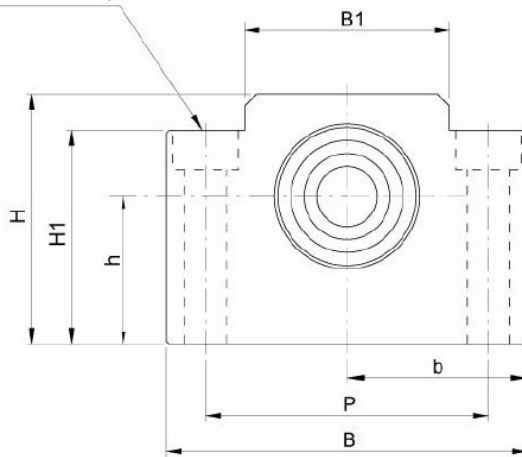
Support Unit BF
(Supported-side rectangular type)



Part No.	Part name	Qty
1	Housing	1
2	Bearing	1 set
3	Snap ring	1

BF

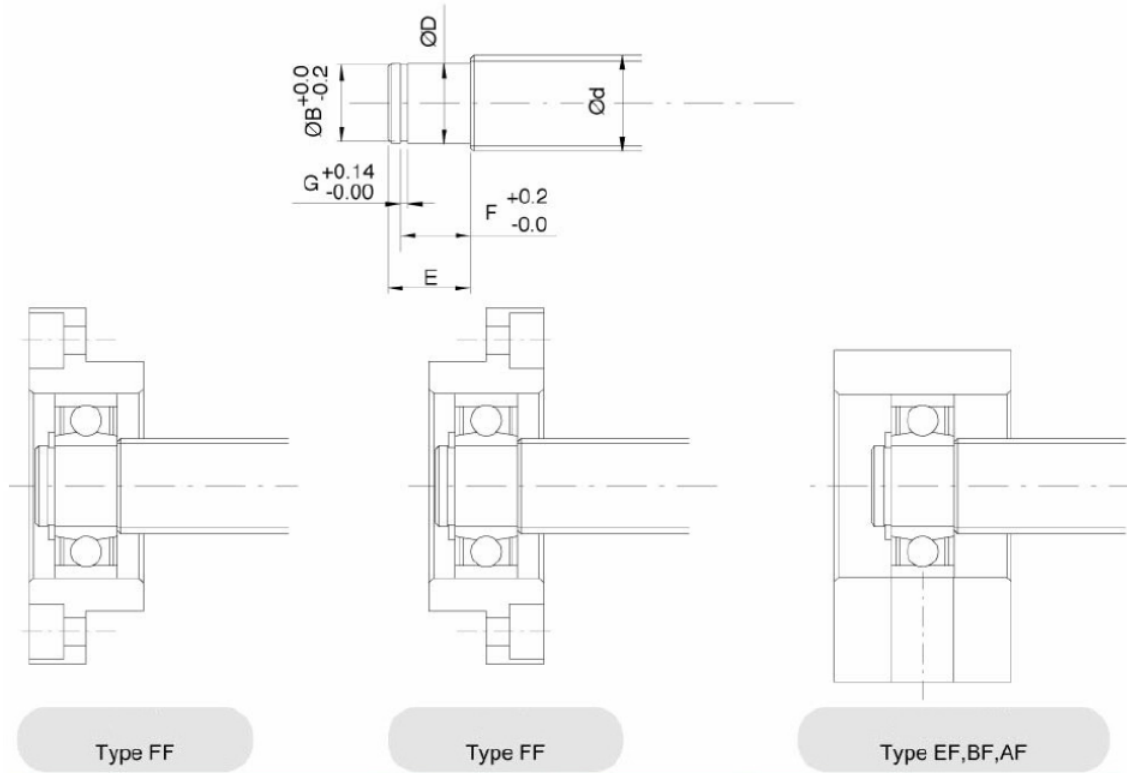
2-X drill ØY counter bore depth Z



Unit : mm

Model No.	Shaft diameter d1	L	B	H	b	h	B1	H1	P	X	Y	Z	Bearing	Snap ring
					±0.02	±0.02								
BF10	8	20	60	39	30	22	34	32.5	46	6.6	10.8	5	608ZZ	S 08
BF12	10	20	60	43	30	25	34	32.5	46	6.6	10.8	1.5	6000ZZ	S 10
BF15	15	20	70	48	35	28	40	38	54	6.6	11	6.5	6002ZZ	S 15
BF17	17	23	86	64	43	39	50	55	68	9	14	8.5	6203ZZ	S 17
BF20	20	26	88	60	44	34	52	50	70	9	14	8.5	6004ZZ	S 20
BF25	25	30	106	80	53	48	64	70	85	11	17	11	6205ZZ	S 25
BF30	30	32	128	89	64	51	76	78	102	14	20	13	6206ZZ	S 30
BF35	35	32	140	96	70	52	88	79	114	14	20	13	6207ZZ	S 35
BF40	40	37	160	110	80	60	100	90	130	18	26	17.5	6208ZZ	S 40

FF,EF,BF,AF
Recommended shaft end shape(Supported-side)
for Support Units types FF,EF,BF,AF



Support unit model No.				Ballscrew shaft OD	Shaft support portion OD				
Type FF	Type EF	Type BF	Type AF	d	D	E	B	F	G
FF06	EF06	-	-	8	6 -0.005 -0.012	9	5.7	6.8	0.8
-	EF08	-	-	10	6 -0.005 -0.012	9	5.7	6.8	0.8
FF10	EF10	BF10	AF10	12/14/15	8 -0.005 -0.012	10	7.6	7.9	0.9
FF12	EF12	BF12	AF12	14/15/16	10 -0.005 -0.012	11	9.6	9.15	1.15
FF15	EF15	BF15	AF15	18/20	15 -0.005 -0.014	13	14.3	10.15	1.15
FF17	-	BF17	-	20/25	17 -0.005 -0.014	16	16.2	13.15	1.15
FF20	EF20	Note(BF20)	AF20	25/28/30	20 -0.005 -0.014	19(16)	19	15.35(13.35)	1.35
FF25	-	BF25	-	30/32/36	25 -0.005 -0.014	20	23.9	16.35	1.35
FF30	-	BF30	-	36/40	30 -0.005 -0.015	21	28.6	17.75	1.75
-	-	BF35	-	40/45	35 -0.005 -0.015	22	33	18.75	1.75
-	-	BF40	-	50	40 -0.005 -0.015	23	38	19.95	1.95